

FLEXFOLD LP 300-400



FOLDING MACHINE FOR FLAT ITEMS - ALL TYPES

APPLICATIONS

FlexFold LP300-400 is a flat linen folding machine that can handle all types of items such as pillowcases, duvet covers, tablecloths, napkins, etc.

OPERATION

The FlexFold LP 300-400 is distinct from other folding machines because of its design.

Simple, robust and effective.

Features that enable it to offer high-quality production and finishing

The FlexFold comes in different configurations, performs 2 or 3 lengthways folds in up to 4 lanes and 1, 2 or 3 cross folds. An encoder measures each item before accessing the area of the lengthways folds and uses a microprocessor to indicate the number of folds according to each type of item. Before passing into the cross-fold area, the item is re-measured so that the previously programmed folding can be done.

Once an item is finished, the FlexFold enables you it to be passed to the single or double stacker. It can also be passed to a side table.



FOLDING SYSTEM

Lengthways folds are made by being blown with forced air and passed between two rollers which exert pressure on the item and transfer it to the next folding point.

The use of the double air-injection line enables all types of item thicknesses to be folded to unbeatable quality levels.

The measurement control system for each item is done by an encoder, thus avoiding the need to clean and maintain photocells and reflectors.



FLEXFOLD LP 300-400



FOLDING MACHINE FOR FLAT ITEMS - ALL TYPES

The items are moved sideways by means of distribution straps.

The FlexFold LP 300-400 is designed and built for a long life and low maintenance.

CROSS FOLDING

The rollers of the cross folder are controlled by a drive motor.



The first cross fold has an effective opening of 900 mm, which allows 3400 mm parts to be folded by making 2 lengthways folds.

In the event of a jam, the folder rollers open automatically, releasing the item.

During the first cross, it automatically checks the correct insertion of items, rejecting any that are twisted.

The first cross fold is done using a mechanical knife.

The second is done by means of reversing belts.

Where needed, the items can be run through the by-pass.

The third fold is also done with reversing belts.

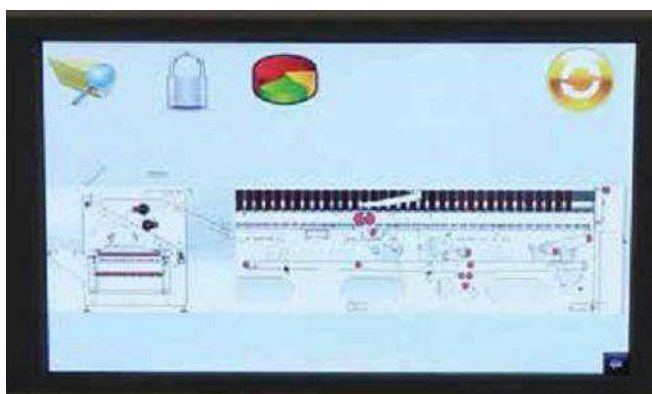
The stacker can be easily installed on either side.

FEATURES

- Rigid, sturdy construction
- Toothed belt transmission; no maintenance required.
- No chains; does not require lubrication.
- Motors managed through a frequency shifter. It eliminates the complicated and expensive maintenance cost of mechanical brakes and clutches.
- Encoder that controls sizes, thereby preventing reflector and photocell problems.
- Automatic synchronisation with the flatwork ironer.
- Working speed of 8 to 50m/m.
- Incorrectly inserted items are automatically rejected.
- Double blowhole line for the first lengthways fold.
- The cross fold rollers open automatically in the event of a jam.
- The folding speed is adjustable due to the frequency shifter control.
- Automatic folding based on the dimensions of the item.
- Numerous configurations for cross folding.
- The first cross fold is carried out by a mechanical blade.
- Cross folding of items up to 900 mm.
- Optional: Double stacker, for Roll Off falls
- Optional: Anti-static bar.
- Optional: Items rejected by a scanner system.

FLEXFOLD LP 300-400

FOLDING MACHINE FOR FLAT ITEMS - ALL TYPES



CONTROL SYSTEM

The FlexFold LP 300-400 incorporates a colour touch screen, with an intuitive, user-friendly design.

The program enables data to be modified, created and collected, production inputs and outputs, etc.

Up to 99 different programs can be entered. Information is collected through a reliable, safe PLC. A USB connector allows you to access data storage.

Availability of communication for synchronisation with the flatwork ironer.

TECHNICAL DETAILS

Air pressure	6 bar	Machine length	306 cm
Air consumption	<10m ³ /hr	Machine width	341-445 cm
Power	3x380/415V, 50/60Hz, 3ph	Machine height	191 cm
Power (b)	3x208/240V, 50/60Hz, 3ph	Lth. conv. or stack	306-419 cm
Power (b)	3x480, 60Hz, 3ph	Width conv. or stack	3x480, 60Hz, 3ph
Power consumption	2.5 kWh	Height with conv. or stack	191 cm
Lines	max. 6	Machine weight	2600-3000 kg
Maximum item length	400 cm	No. of items per...	1500
Max. item width	3000, 3300, 3500, 3500, 4000 mm		